



Sustainable Futures for Europe's Heritage in Cultural Landscapes:

Tools for understanding, managing, and protecting landscape functions and values

**Driving forces of landscape change:
A pan-European, comparative analysis**

Matthias Bürgi WSL



Gutenbrunnen, study municipality Lenk, Switzerland. © Albert Sommer

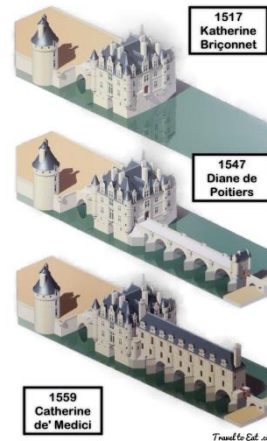


This project has received funding from the European Union's Seventh Framework Programme for research, technological development and demonstration under grant agreement no 603447

FP7, Collaborative Project
1 December 2013 – 30 November 2016

Background

- (a) How did the landscapes change?
- (b) What are the dominant processes and the temporal trends therein?
- (c) What driving forces are responsible for the changes and processes observed?

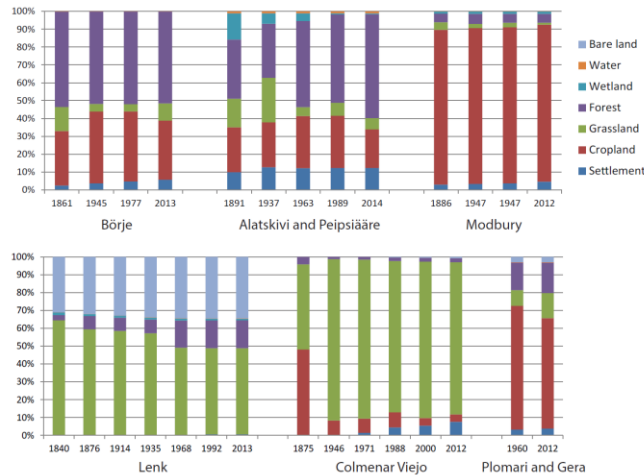
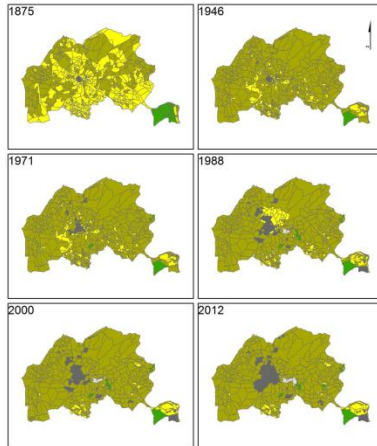


A bird's eye view (e.g. maps) provides information on land use/land cover

Historical analyses reveal major events, processes which left marks in the landscape

Oral history interviews provide information on perceived and remembered changes and driving forces.

Results

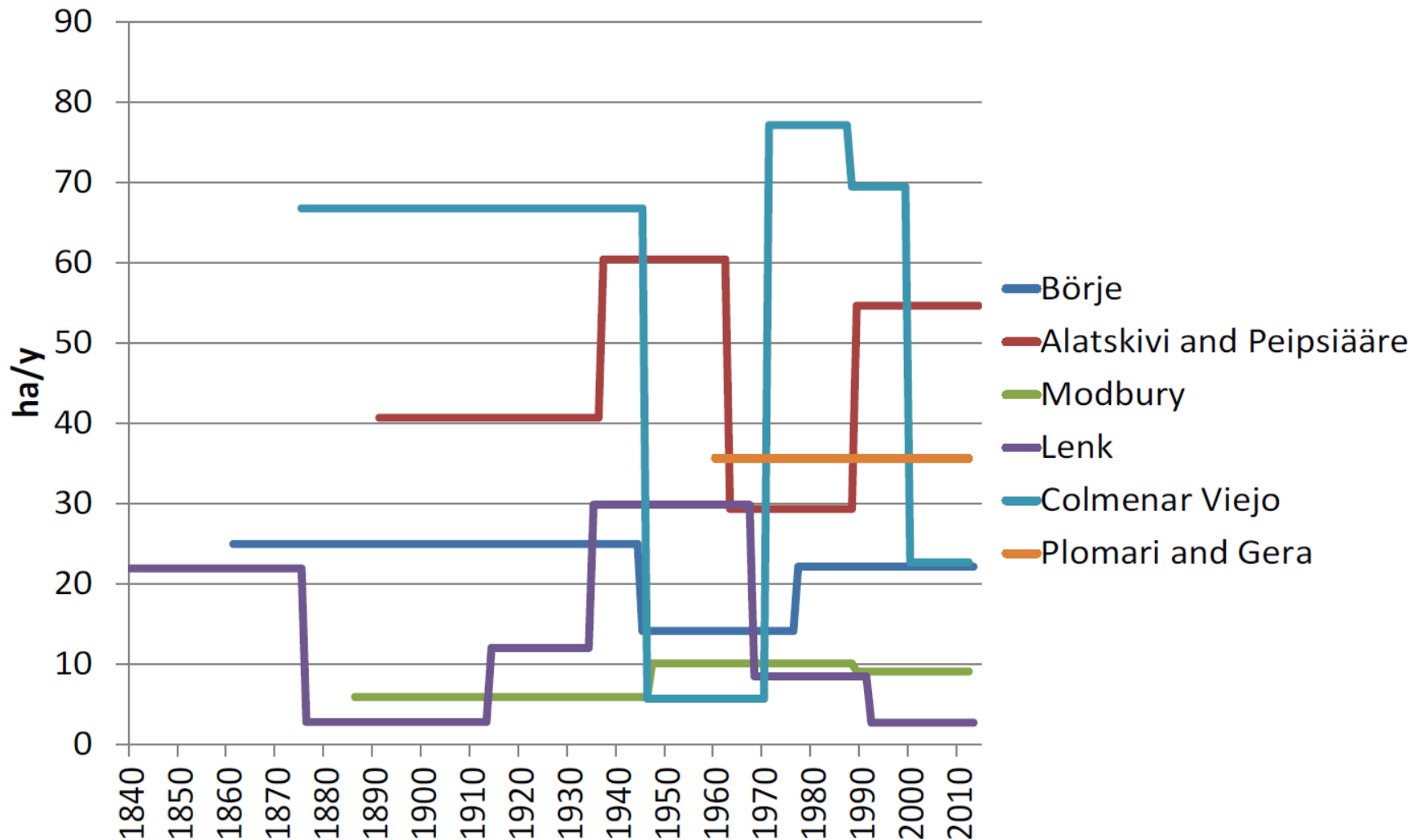


“Everybody in the village had some benefits from the building industry and so it is impossible to stop it.”

“You don’t see the glaciers from down here any more. The glaciers are melting fast.”

“Everything is done for speed now, so there is no time to watch and gaze around the countryside like we used to.”

Rates of change 1840 - 2010



Generally relevant driving forces are...

Access and infrastructure



Labour market



Climate change



Political shifts



Technological innovations

